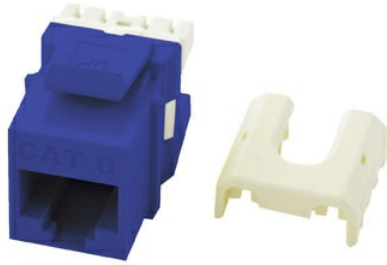




On-Q
Cat 6 Quick Connect RJ45 Keystone Insert, Blue
Part No. WP3476BE



This 5-pack of Cat 6 Quick Connect RJ45 Keystone Inserts in white is perfect for small-scale network installations. Each insert features a recessed hex nut that prevents jack rotation, ensuring a secure fit. These inserts can be terminated with any 110 punchdown tool and exceed EIA/TIA 568A/B Cat 6 Performance Specifications. Available in multiple colors, they are ideal for various networking applications.

Features & Benefits

Recessed hex nut does not allow for jack rotation

RJ45 Inserts can be terminated with any 110 punchdown tool

Exceeds EIA/TIA 568A/B Cat 6 Performance Specifications Available in Black, Brown, White, Light Almond, Grey, Blue, Orange

Available in contractor packs

Specifications

General Info

Product Line	On-Q	Color	Blue
UPC Number	804428036722	Country Of Origin	Taiwan, Province Of China
Features	Quick Connect Compatible	Application Sector	Residential
Standard	UL (UL/ANSI 1863), CSA (CAN/CSA-C22.2 No. 182.4-1990), IEEE 802.3an 10GBase-T, TIA 568-B.2-10, RoHS		

Dimensions

Product Width US	0.67 in	Product Height US	0.76 in
Product Length US	1.18 in		

Technical Information

Termination Style

Punchdown

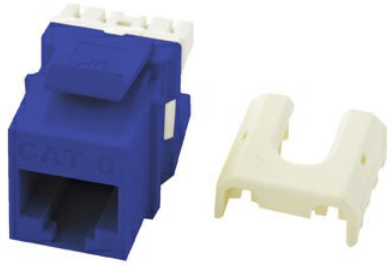
Cable Type

Cat6

Environmental Conditions 0 to 93% (relative humidity, non-condensing)



On-Q
Cat 6 Quick Connect RJ45 Keystone Insert, Blue
Part No. WP3476BE



This 5-pack of Cat 6 Quick Connect RJ45 Keystone Inserts in white is perfect for small-scale network installations. Each insert features a recessed hex nut that prevents jack rotation, ensuring a secure fit. These inserts can be terminated with any 110 punchdown tool and exceed EIA/TIA 568A/B Cat 6 Performance Specifications. Available in multiple colors, they are ideal for various networking applications.

Features & Benefits

Recessed hex nut does not allow for jack rotation

RJ45 Inserts can be terminated with any 110 punchdown tool

Exceeds EIA/TIA 568A/B Cat 6 Performance Specifications Available in Black, Brown, White, Light Almond, Grey, Blue, Orange

Available in contractor packs

Specifications

General Info

Product Line	On-Q	Color	Blue
UPC Number	804428036722	Country Of Origin	Taiwan, Province Of China
Features	Quick Connect Compatible	Application Sector	Residential
Standard	UL (UL/ANSI 1863), CSA (CAN/CSA-C22.2 No. 182.4-1990), IEEE 802.3an 10GBase-T, TIA 568-B.2-10, RoHS		

Dimensions

Product Width US	0.67 in	Product Height US	0.76 in
Product Length US	1.18 in		

Technical Information

Termination Style

Punchdown

Cable Type

Cat6

Environmental Conditions 0 to 93% (relative humidity, non-condensing)
