

## FEATURES & SPECIFICATIONS

**INTENDED USE** — High performance parabolic luminaires for use in open area applications and electronic offices where optical control, visual comfort and light cut-off are important.

Design optimized for use with T8 lamps and low-profile electronic ballasts.

Choice of diffuse or specular louvers utilizing the latest developments in louver finishing for minimized louver iridescence.

**CONSTRUCTION** — Black reveal provides floating louver appearance, conceals optional air-supply slots.

Square corner end plates improve strength and durability.

Integral T-bar safety clips hold fixture to T-bar securely; no fasteners required.

Heavy gauge hinges die-formed for maximum strength; spring action latches concealed in black reveal.

Housing formed from cold-rolled steel. Louver formed from anodized aluminum. No asbestos used in this product.

Overlapping flange and modular ceiling trims available factory installed with swing gate hangers or field convertible with optional trim and hangers.

Finish: Five-stage iron-phosphate pretreatment ensures superior paint adhesion. Painted parts finished with high-gloss, baked white enamel.

**ELECTRICAL** — Thermally-protected, resetting, Class P, HPF, non-PCB, UL Listed, CSA certified ballast is standard.

Electronic ballasts are sound rated A.

Ballast disconnect provided standard where required to comply with US and Canadian electrical codes.

Fixture conforms to UL1570 and is suitable for damp locations. AWM, TFM or THHN wire used throughout, rated for required temperatures.

**LISTING** — UL Listed (Standard), CSA Certified or NOM Certified (see Options).

**WARRANTY** — 1-year limited warranty. Complete warranty terms located at [www.acuitybrands.com/CustomerResources/Terms\\_and\\_conditions.aspx](http://www.acuitybrands.com/CustomerResources/Terms_and_conditions.aspx)

**Note:** Actual performance may differ as a result of end-user environment and application.

Specifications subject to change without notice.

Catalog Number
Notes
Type

**PARAMAX® Parabolic Troffer**

# 2PM3N 2'x2'



**3" Louver Family  
6" Wide U Lamps**

### Specifications

Length: 24 (60.9)

Width: 24 (60.9)

Depth: 4-1/2 (11.4)

Weight: 16 lbs (7.3 kg)

All dimensions are inches (centimeters).

### ORDERING INFORMATION

For shortest lead times, configure products using **bolded options**.

**Example:** 2PM3N G B 2 U316 9LD MVOLT GEB10IS

2PM3N				2	U316			
Series		Trim type	Air function	Number of lamps	Lamp type	Number of cells	Louver finish	Voltage
2PM3N	Paramax 3" louver family	G	Grid	2 (Not included)	U316 32W T8 U (6" leg)	6	LD Low iridescent anodized diffuse silver	MVOLT¹ 120 277 347 (Others available)
		F	Overlapping flanged			9	LS Low iridescent anodized specular silver	
		ST	Screw slot			12		
					16			
Options								
GEB10IS	Electronic ballast, ≤10% THD, instant start			QFC213_	Reloc Quick-Flex ³⁴	ACS	Air closure strips (A and D models only)	
GEB10PS	Electronic ballast, ≤10% THD, programmed start			LST	Tandem fixture pairs (shared ballasts)	APB	Air-pattern control blades (A and D models only)	
EL	Emergency battery pack (nominal 500 lumens)			LP_	Lamped, specify lamp type and color	PAF	Painted after fabrication (white enamel)	
EL14	Emergency battery pack²			GLR	Internal fast-blow fuse⁴	JP	Palletized and stretch-wrapped (G trim only)	
PWS1836	6' prewire, 3/8" dia., 18-gauge, 3 wires			GMF	Internal slow-blow fuse⁴	CSA	CSA certified	
						NOM	NOM certified	

### Notes

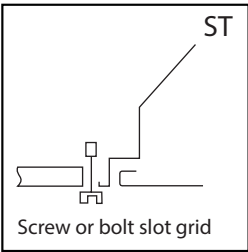
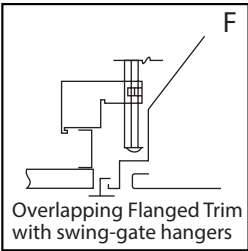
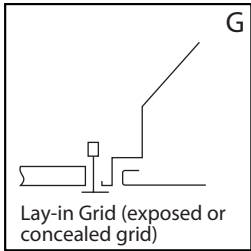
- 1 MVOLT standard for 120V and 277V applications. Some options require voltage specified.
- 2 Some options increase fixture depth. Consult factory if plenum space is a concern.
- 3 Must specify circuit wiring. Refer to [www.lithonia.com/Reloc](http://www.lithonia.com/Reloc) for additional information.
- 4 Must specify voltage.

# 2PM3N 2'x2' 6" U Lamps, 3" Louver Family

## MOUNTING DATA

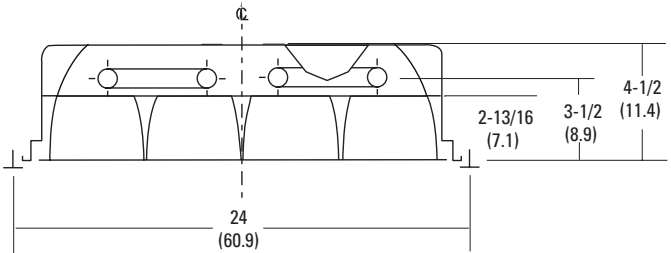
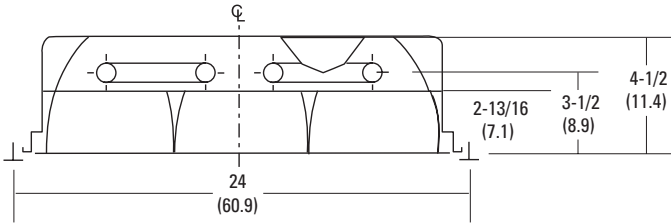
Continuous row mounting of flanged units requires CRE and CRM trim options. Consult factory.

Mounting Information - Trim Types	
Ceiling type	Appropriate trim type
Exposed grid tee	G
Concealed grid tee	G,ST
Concealed Z-spline	F
Screw slot (consult factory)	ST
Acoustical tile, plaster or plasterboard on rigid support parallel to lamps	F



## DIMENSIONS

All dimensions are inches (centimeters) unless specified otherwise.



### Notes

- 1 Recommended rough-in dimensions for F trim fixtures 24"x24". (Tolerance is +1/4", -0") Swing-gate range 1" to 4-3/16", span 23-1/2" to 26-5/16".

## PHOTOMETRICS

Full photometric data available upon request.

TEST NO: LTL14506  
2PM3N G B 2U316 9LD GEB  
LUMENS PER LAMP: 2850  
LAMPS PER LUMINAIRE: 2

Coefficients of Utilization												
ROR	f p	80%			70%			50%			0 2	
	pc	50%	30%	10%	50%	30%	10%	50%	30%	10%		
	pw											
0	83	83	83		81	81	81	77	77	77		
1	75	72	70		73	71	69	70	68	67		
2	66	62	59		65	61	58	63	60	57		
3	59	54	50		58	53	50	56	52	49		
4	53	47	43		52	47	43	50	46	42		
5	48	42	38		47	41	37	45	41	37		
6	43	37	33		42	37	33	41	36	33		
7	39	33	29		38	33	29	37	33	29		
8	36	30	26		35	30	26	34	29	26		
9	33	27	24		32	27	23	31	27	23		
10	30	25	21		30	25	21	29	24	21		

Zonal Lumen Summary			
Zone	Lumens	% Lamp	% Fixture
0° - 30°	1269.5	22.3	32.0
0° - 40°	2135.9	37.5	53.8
0° - 60°	3634.7	63.8	91.6
0° - 90°	3969.3	69.6	100.0
90° - 180°	0.0	0.0	0.0
0° - 180°	3969.3	69.6	100.0

TEST NO: LTL14507  
2PM3N G B 2U316 16LD GEB  
LUMENS PER LAMP: 2850  
LAMPS PER LUMINAIRE: 2

Coefficients of Utilization												
ROR	f p	80%			70%			50%			0 2	
	pc	50%	30%	10%	50%	30%	10%	50%	30%	10%		
	pw											
0	70	70	70		68	68	68	65	65	65		
1	63	61	59		62	60	58	59	58	56		
2	56	53	50		55	52	49	53	50	48		
3	50	46	43		49	45	42	47	44	41		
4	45	40	37		44	40	36	43	39	36		
5	40	35	32		40	35	32	38	34	31		
6	36	31	28		36	31	28	35	31	28		
7	33	28	25		33	28	25	32	28	25		
8	30	25	22		30	25	22	29	25	22		
9	28	23	20		27	23	20	27	23	20		
10	26	21	18		25	21	18	25	21	18		

Zonal Lumen Summary			
Zone	Lumens	% Lamp	% Fixture
0° - 30°	1078.1	18.9	32.2
0° - 40°	1773.9	31.1	53.0
0° - 60°	3113.4	54.6	93.0
0° - 90°	3349.4	58.8	100.0
90° - 180°	0.0	0.0	0.0
0° - 180°	3349.4	58.8	100.0